

# Instruction to prepare your Manuscript for International Symposium of Management Engineering 2009

Ichiro Kyushu  
Soft University  
2-4 Hibikino, Wakamatsu,  
Kitakyushu, Fukuoka  
808-0196 JAPAN  
E-mail: [ichiro@fuzzy.ac.jp](mailto:ichiro@fuzzy.ac.jp)

Jiro Fukuoka  
Science Corporation  
2-4 Hibikino, Wakamatsu,  
Kitakyushu, Fukuoka  
808-0196 JAPAN  
E-mail: [jiro@fuzzy.co.jp](mailto:jiro@fuzzy.co.jp)

**Abstract:** The abstract goes here. What you need to do is to insert your abstract here. We suggest that you read this document carefully before you begin processing your manuscript.

## 1. Introduction

If you have an introduction to your paper, put it here.

May all your publication endeavors be successful?

## 2. Page format

A paper submitted to International Symposium of Management Engineering 2009 should be prepared in a single-spaced and two-column format. The number of papers of the manuscript has to be from 6 pages to 10 pages.

Margins of top and bottom are 25 mm and margins of left and right sides are 20mm.

1. Paper size  
A4 (about 216mm × 280mm)
2. Page limit  
Even number from 6 to 10 pages

## 3. Sample of figure and table

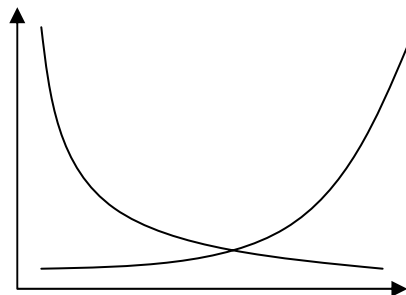


Figure 1 Sample of figure

Table 1 Sample of table

$u_k$		$y_k$		
		N	Z	P
$r_k$	N	N	N	Z
	Z	P	Z	N
	P	P	P	P

## 4. Attention

We accept PDF file of your paper via network. And your PDF file should be set to enable editing for adding page number.

Please check the address to send your paper on our Web Page.

## 5. Deadline of the final paper

Till March **31, 2009** your camera-ready paper in PDF for reviewing has to be submitted to the following email address:

[isme@list.waseda.jp](mailto:isme@list.waseda.jp)

The notification of the acceptance will be sent to you till April **30, 2009** and the submission of the final camera ready paper will be till May **31, 2009**.

## References

- [1] Authors, "paper's title," *name of journal*, Vol.X, No.Y, pp.AAA-ZZZ, 2007