

Instruction to prepare your Manuscript for International Symposium of Management Engineering 2012

Ichiro Kyushu

Soft University
2-4 Hibikino, Wakamatsu
Kitakyushu, fukuoka
808-0135 JAPAN
E-mail:isme@list.f.waseda.jp

Jiro Fukuoka

Science Corporation
2-4 Hibikino, Wakamatsu
Kitakyushu, fukuoka
808-0135 JAPAN
E-mail:isme@list.f.waseda.jp

Abstract: The abstract goes here. What you need to do is to insert your abstract here. We suggest that you read this document carefully before you begin processing your manuscript.

1. Introduction

If you have an introduction to your paper, put it here.

May all your publication endeavors be successful?

2. Page format

A paper submitted to International Symposium of Management Engineering 2005 should be prepared in a single-spaced and two-column format. The number of papers of the manuscript has to be from 6 pages to 10 pages.

Margins of top and bottom are 25 mm and margins of left and right sides are 20mm.

1. Paper size
A4 (about 216mm × 280mm)
2. Page limit
Even number from 6 to 10 pages

3. Sample of figure and table

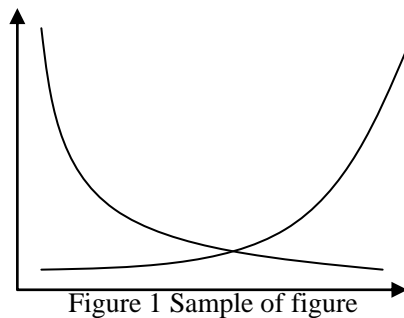


Table 1 Sample of table

w_k	y_k		
	N	Z	P
r_k	N	N	Z
	Z	P	N
	P	P	P

4. Attention

We accept PDF file of your paper via network. And your PDF file should be set to enable editing for adding page number.

Please check the address to send your paper on our Web Page.

5. Deadline of the final paper

Till **June 30, 2012** your camera-ready paper in PDF for reviewing has to be submitted to the following email address:

isme@list.waseda.jp

The notification of the acceptance will be sent to you till **July 15, 2012** at latest according your submission and the submission of the final camera ready paper will be till **July 30, 2012**.

References

- [1] Authors, "paper's title," *name of journal*, Vol.X, No.Y, pp.AAA-ZZZ, 2007